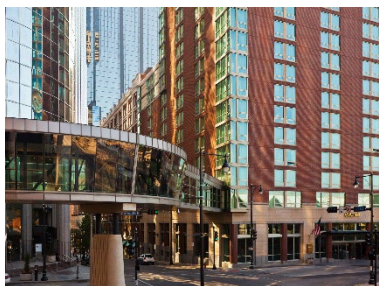
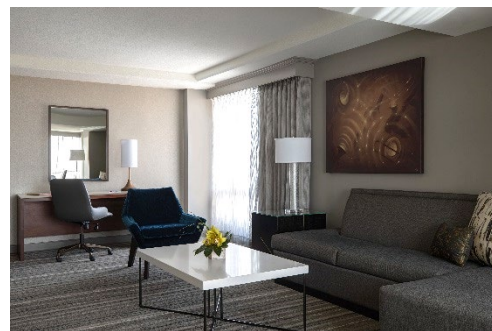
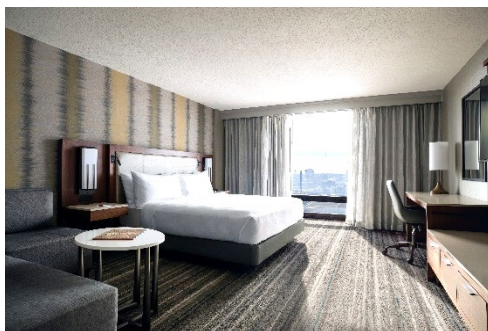

HOTEL DESCRIPTION

The Kansas City Marriott Downtown is the perfect blend of historic elegance and modern style – welcoming you to Missouri with excellent service and a fantastic downtown location. The two-tower complex features a striking lobby space designed for today's business, convention or leisure traveler and are linked via a second-floor pedestrian walkway. As the city's largest hotel, we are neighboring and conveniently located one block away from the Kansas City Convention Center. The hotel is also a short walk from the exciting Kansas City Power & Light Entertainment District, the new Kansas City Streetcar, Kauffman Center for the Performing Arts, and so much more!



GUEST ROOMS

- 970 newly renovated guest rooms and suites designed with tasteful, elegant, modern look and amenities
 - All rooms are non-smoking, each with a 55-inch flat-screen TV and the latest in guest room entertainment television options (like Netflix), plus luxurious Revive™ bedding
- 39 suites: (5) Premier Suites, (31) Junior Suites, (3) Hospitality Suites
- 501 Queen/Queen (5 ADA), 430 King (20 ADA)



FUNCTION SPACE

- 93,374 total square feet of function space: 42 meeting rooms including 34 breakout rooms
- Neighboring and conveniently located one block from the [Kansas City Convention Center](#)
- In-House Audio-Visual Department (Encore)

BALLROOMS

- East Tower Imperial/Colonial Ballroom - 17,400 square feet - Maximum Banquet Seating 1,400
- West Tower Count Basie Ballroom - 15,080 square feet - Maximum Banquet Seating 1,140
- East Tower Historical Muehlebach Hotel Lobby, restored to its early 20th Century elegance - Maximum Banquet Seating 180

EXHIBIT SPACE

- Royal Hall - 12,000 square foot multi-function, carpeted exhibit hall - Maximum 75 Exhibits



AMENITIES

- Business Center, Sundry Shop, Valet Laundry Services, A la Carte (room service), Guest Services Desk for Special Requests and Additional Assistance
- MLounge (executive/concierge lounge) – Lobby Level, West Tower
- Valet Parking (currently \$42/day) and Self-Parking (currently \$32/day) available

HEALTH CLUB

- 22,000 sq ft Fitness Center
 - Locker rooms, Nautilus and Hammer Strength Equipment, Life Fitness, Bikes, Stair Masters, Treadmills, Ellipticals, Rowing Machine & Free Weights
 - Indoor Lap Swimming Pool featuring spectacular top-floor panoramic views!



RESTAURANTS & LOUNGES

- Coffee Central: Featuring a variety of specialty coffees and snacks (Open 6am-3pm, Daily)
- MetropolitanKC: Contemporary restaurant featuring delicious breakfast options (Open 6am-11am, Daily)
- Bar Central: Featuring 5-10-20 minute menus, cocktails and a variety of local and imported beers (Open 11am-12am, Sun-Thu & 11am-1am, Fri/Sat)
- A La Carte Dining: modern take on Room Service, Delivery or Pick-Up (6am-12am, Daily)
- Voo Lounge: Cocktail lounge featuring curated cocktails and light bites (4pm-10pm, Wed/Thu, 6pm-1am Fri/Sat)



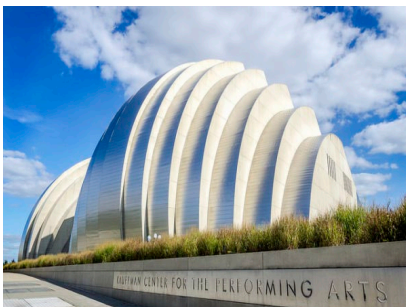
LOCATION

Our Hotel is conveniently located in the heart of the convention business, government and theater districts. Just steps away from:

- Kauffman Center for Performing Arts (<https://www.kauffmancenter.org/>)
- Kansas City Live! Power & Light Entertainment District (<http://www.powerandlightdistrict.com>)
- T-Mobile Center (<https://www.t-mobilecenter.com/>)
- Kansas City Convention Center (<https://kcconvention.com/>)

Just a short drive from many area attractions such as:

- (1.6) miles from first multi-level sports complex Hy-Vee Arena (<http://www.hyveearena.com/>)
- (1.6) miles from National WWI Museum and Memorial (<https://www.theworldwar.org/>)
- (8) miles from Kauffman Stadium for Kansas City Royals (<https://www.mlb.com/royals>)
- (8) miles from Arrowhead Stadium for Kansas City Chiefs (<https://www.chiefs.com/>)
- (13.8) miles from Children's Mercy Park for Sporting KC (<https://www.sportingkc.com/>)
- (13.8) miles from NASCAR Kansas Speedway (<http://www.kansasspeedway.com/>)
- (19) miles/20 minutes from Kansas City International Airport (MCI) (<https://www.flykci.com/>)



TRANSPORTATION

- Kansas City Streetcar complimentary, modern and convenient, connecting 2 miles of downtown's most sought-after attractions
- KCI Shuttle (thru SuperShuttle) provides service to and from the airport, \$18 one-way
- Taxi Service is available 24-hours daily from our front drive/valet
- Airport Taxi Service, approximately \$50 one-way, per car
- Uber & Lyft available throughout the city, airport Uber Service is approximately \$35 one-way, per car

ADDITIONAL INFORMATION/MAPS

DOWNTOWN



KANSAS CITY STREETCAR ROUTE

